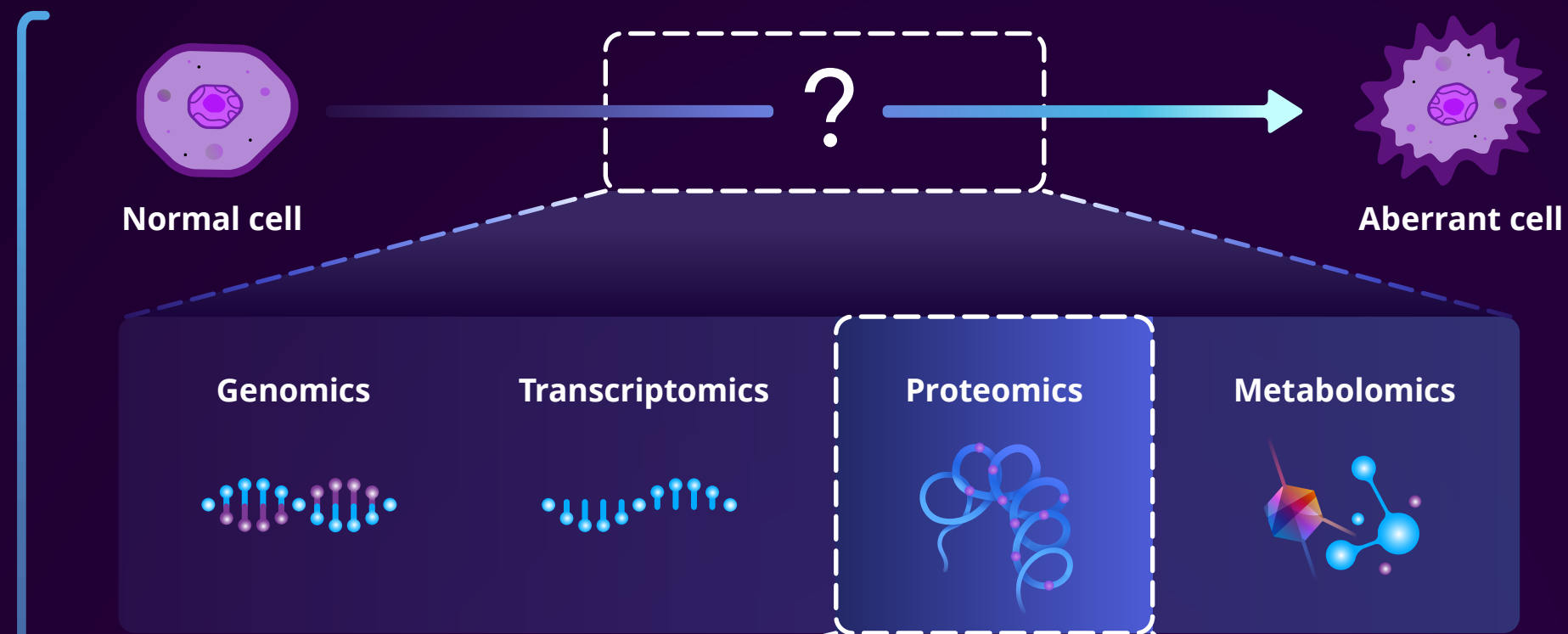


Glycobiology: Expanding the Omics Toolkit

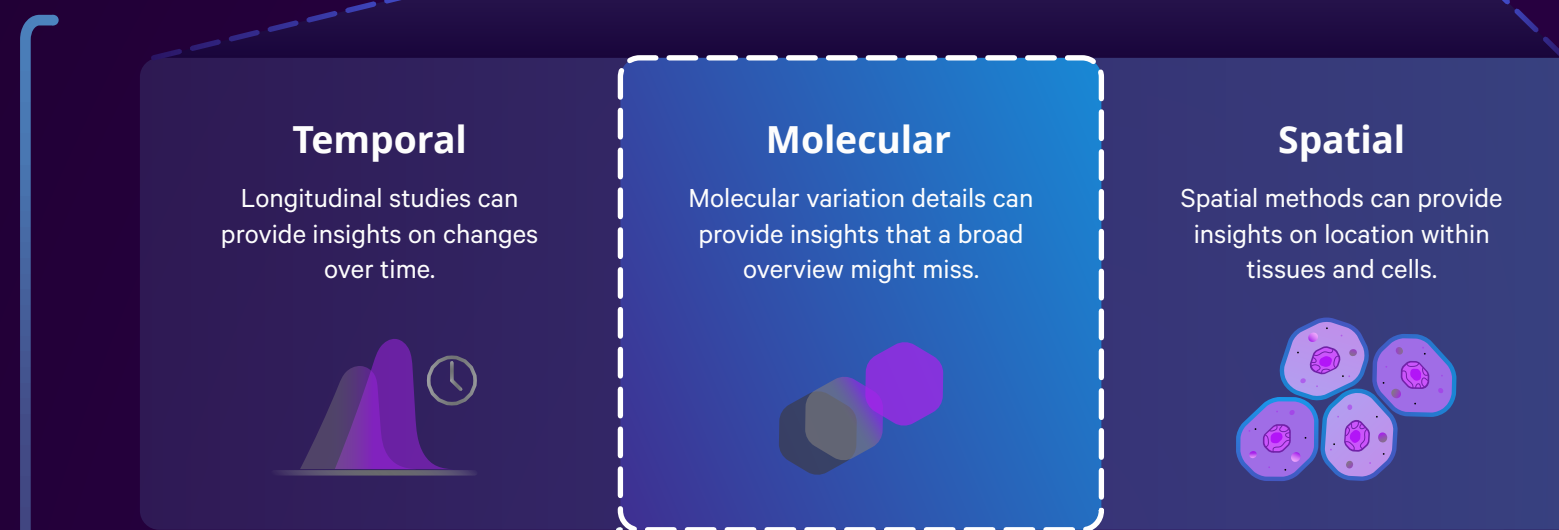
Cell biology, disease, and more

Our drive to decode cell biology—and its role in disease, biomarkers, and therapy—has fueled the rise of multi-omics, giving us a more complete picture than ever before.



Deeper Omics

Additional detail within each omic provides granularity that's increasingly required to understand biology.



Omics technologies aren't just multiplying — they're evolving. Each one increasingly capable of providing more detailed, biologically relevant insights than ever before.

Post-translational modifications (PTMs) like phosphorylation and glycosylation shape protein function, stability, and cellular communication, making them crucial for understanding health and disease. Just determining the expression level of a protein is not enough.

Among PTMs, glycosylation is especially complex and challenging to study due to its diverse structures and context-specific roles, yet unlocking its secrets is key to breakthroughs in diagnostics, therapeutics, and biomarker discovery.

Applications of Glycosylation:

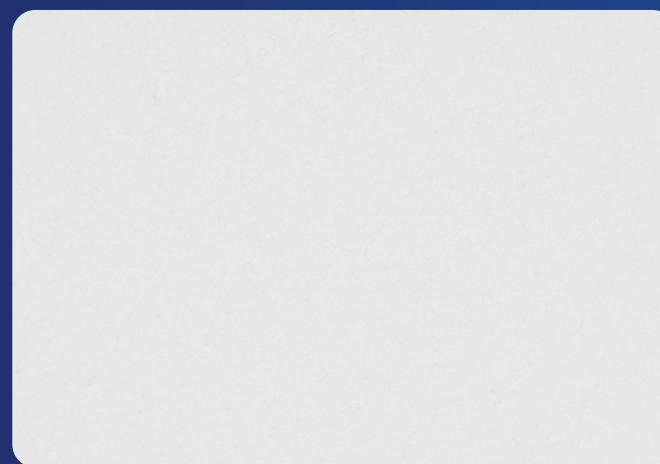
- Diagnostics
- Therapeutics
- Biomarker Discovery
- Glycosylation

How can you get spatial insights to protein glycosylation to access breakthroughs in your research?

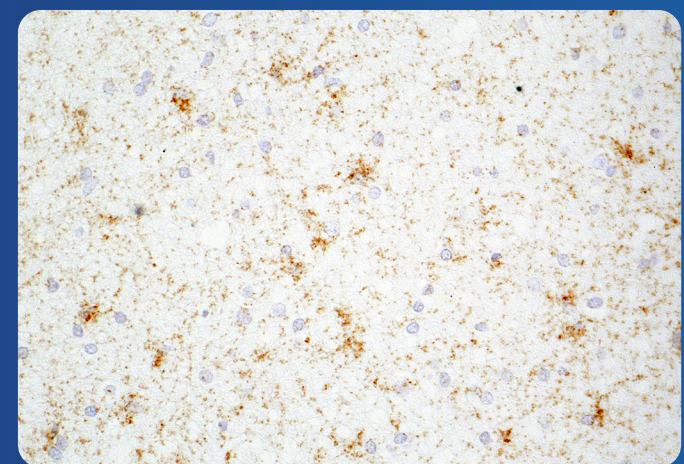
Glysite Explorer *in situ* PLA Kit

reveals an additional layer of information that standard IHC cannot.

Glysite Explorer isPLA using GFAP and SNA shows minimal staining in normal brain tissue



Glysite Explorer isPLA using GFAP and SNA shows extensive staining in brain cancer (anaplastic astrocytoma) tissue.



Glysite™ Explorer *in situ* PLA Glycan Detection Kit

Powered by Navinci

Go beyond protein expression – unlock a new dimension of glycosylation in your cells and tissues.

- Spatially visualize protein glycosylation to unlock new insights
- Diverse sample compatibility, including FFPE tissues and cells
- Seamless integration with IHC workflows – no special setup
- Reliable, validated technology provides confidence and reproducibility