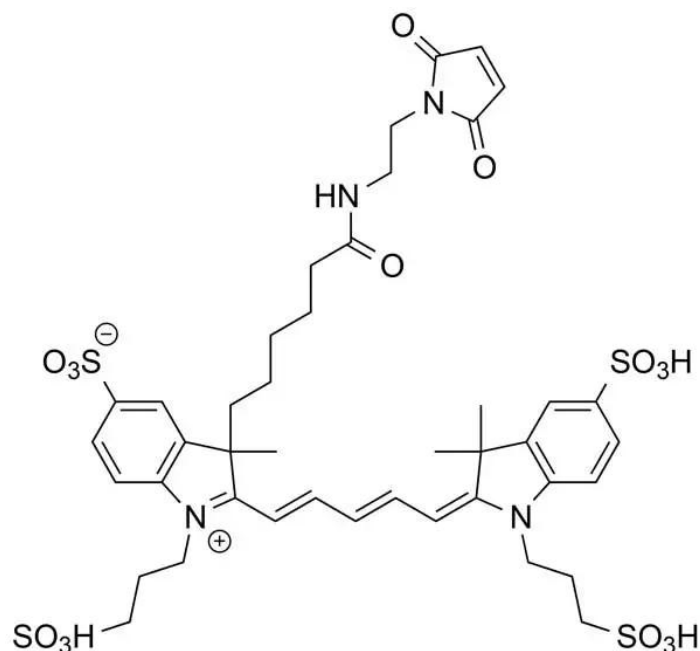


AZDYE 647 MALEIMIDE

SKU: FP-1122



Description

633/647



Laser
line

Cy5



Common
filter set

650



Excitation
max

665



Emission
max

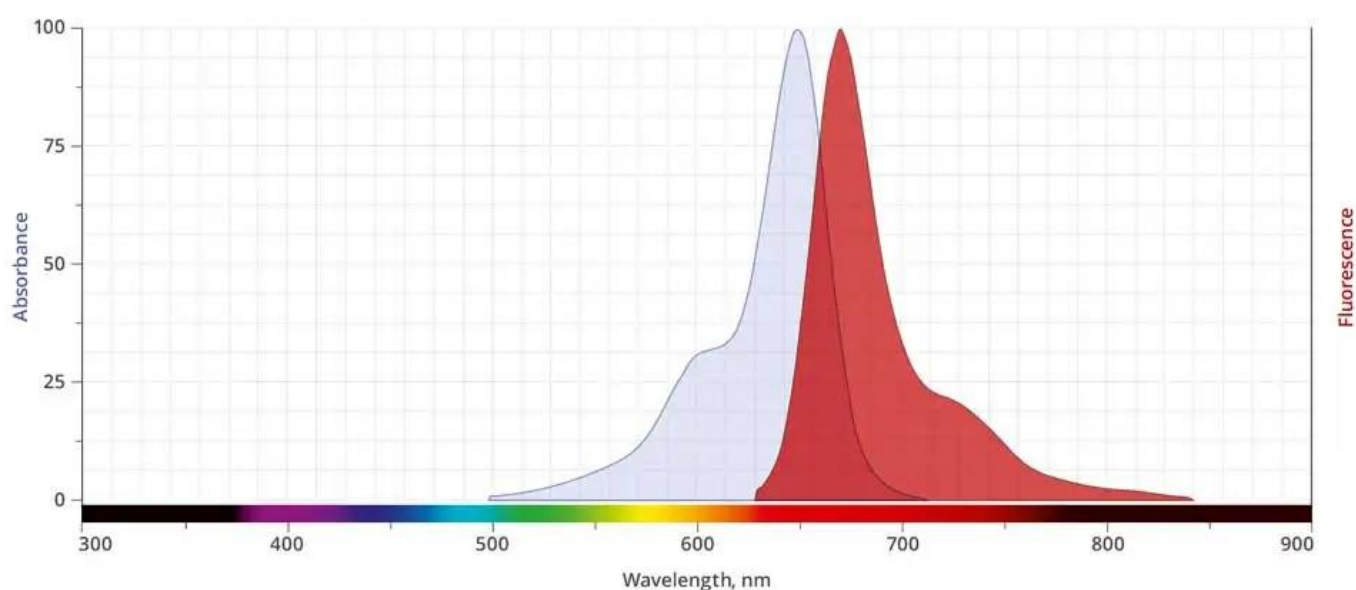
AZDye™ 647 Maleimide is a water-soluble, far-red-fluorescent dye that is spectrally similar to other 650 dyes that are used for flow cytometry, microscopy and other applications. AZDye™ 647 conjugates ideally suited for the 633 nm or 647 nm laser lines. A significant advantage to using long wavelength dyes such as Cy5 or AZDye™ 647 over other fluorophores is the low autofluorescence of biological specimens in this region of the spectrum.

For research use only. Not intended for therapeutic or diagnostic use in animals or humans.

Maleimide is the most popular sulfhydryl-reactive reactive group for conjugating the dye to a thiol group on a protein, oligonucleotide thiophosphate, or low molecular weight ligand. The maleimide group specifically and efficiently reacts with reduced thiols (sulfhydryl groups, -SH) at pH 6.5 to 7.5 to form stable thioether bond. The resulting conjugates exhibit brighter fluorescence and greater photostability than the conjugates of many other spectrally similar fluorophores.

AZDye™ 647 is structurally similar to Alexa Fluor® 647, and spectrally is almost identical to Cy5 Dye, Alexa Fluor® 647, CF® 647 Dye, or any other Cyanine5 based fluorescent dyes.

Abs/Em Spectra



Specifications

Unit Size	1 mg, 5 mg, 25 mg, 100 mg
Reactivity	Thiol (Cys)
Abs/Em Maxima	649/671 nm
Extinction coefficient	270,000 cm ⁻¹ M ⁻¹
Solubility	Water, DMSO, DMF
Spectrally similar dyes	Cy5, DyLight® 649,
Molecular weight	981.13 (protonated)
Storage Conditions	-20°C.

For research use only. Not intended for therapeutic or diagnostic use in animals or humans.

Shipping Conditions

Ambient temperature

For research use only. Not intended for therapeutic or diagnostic use in animals or humans.

[AZDye 647 Maleimide](https://vectorlabs.com/products/azdye-647-maleimide)

<https://vectorlabs.com/products/azdye-647-maleimide>