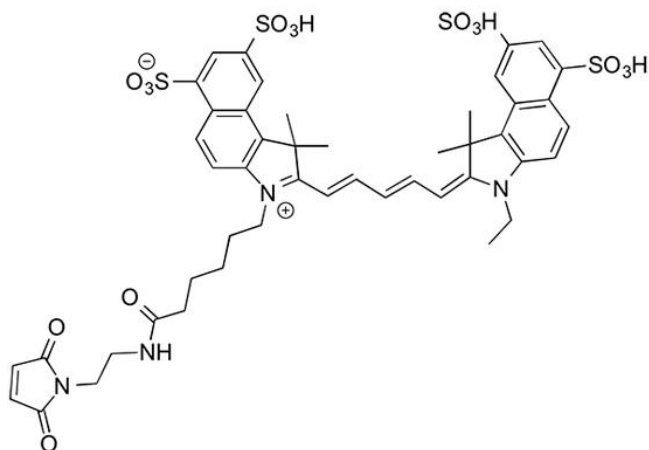


## CY5.5 MALEIMIDE

**SKU:** FP-1342



### Description

**633/647**



Laser  
line

**Cy5.5**



Common  
filter set

**673**



Excitation  
max

**694**



Emission  
max

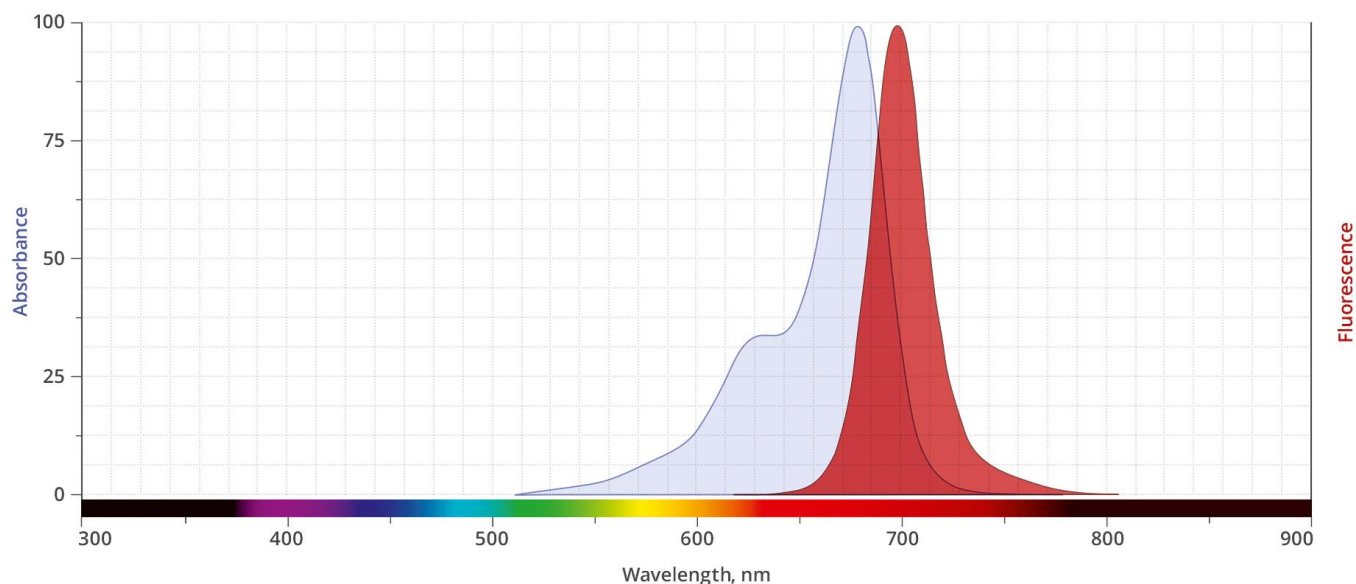
Cy5.5 Maleimide (also sold under as sulfo-Cyanine5.5 Maleimide) is a bright and photostable near-IR dye that is spectrally similar to Alexa Fluor® 680, DyLight 680™, and IRDye® 680 dye. Cy5.5 Maleimide is completely water-soluble and often a reagent of choice for labeling antibodies, peptides, and proteins that are sensitive toward organic co-solvents. Cy5.5 conjugates are pH insensitive from pH 4 to pH 10 and produces minimal autofluorescence of biological specimens in this region of the spectrum. Fluorescence of this long-wavelength Cyanine dye is not visible to the human eye but is readily detected by most imaging systems.

Maleimide is the most popular sulfhydryl-reactive reactive group for conjugating the dye to a

**For research use only. Not intended for therapeutic or diagnostic use in animals or humans.**

thiol group on a protein, oligonucleotide thiophosphate, or low molecular weight ligand. The maleimide group specifically and efficiently reacts with reduced thiols (sulfhydryl groups, -SH) at pH 6.5 to 7.5 to form stable thioether bonds.

## Abs/Em Spectra



## Specifications

<b>Unit Size</b>	1 mg, 5 mg, 25 mg, 100 mg
<b>Reactivity</b>	Thiol (Cys)
<b>Abs/Em Maxima</b>	675/694 nm
<b>Extinction coefficient</b>	190,000 cm <sup>-1</sup> M <sup>-1</sup>
<b>Solubility</b>	Water, DMSO, DMF
<b>Spectrally similar dyes</b>	Alexa Fluor® 680, DyLight® 680, IRDye® 680
<b>Molecular weight</b>	1039.17
<b>Storage Conditions</b>	-20°C.
<b>Shipping Conditions</b>	Ambient temperature

**For research use only. Not intended for therapeutic or diagnostic use in animals or humans.**