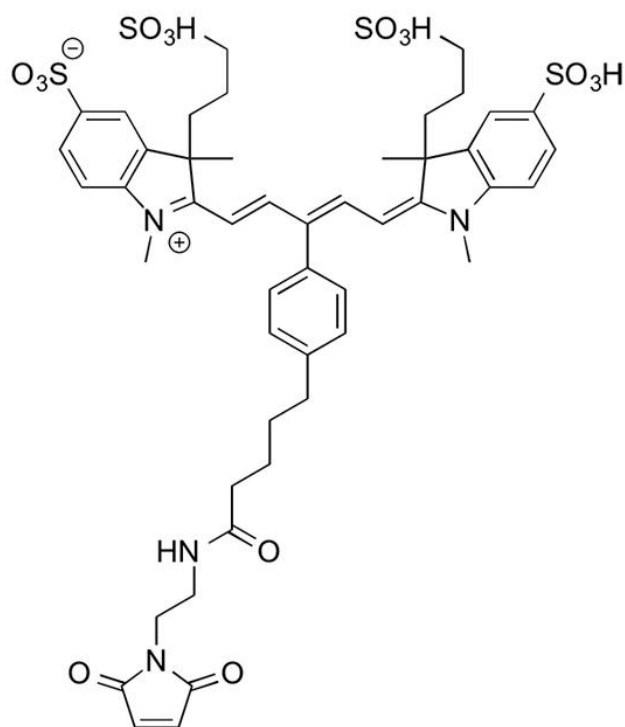


IR 650 MALEIMIDE

SKU: FP-1502



Description

633/647



Laser
line

Cy5



Common
filter set

650



Excitation
max

665



Emission
max

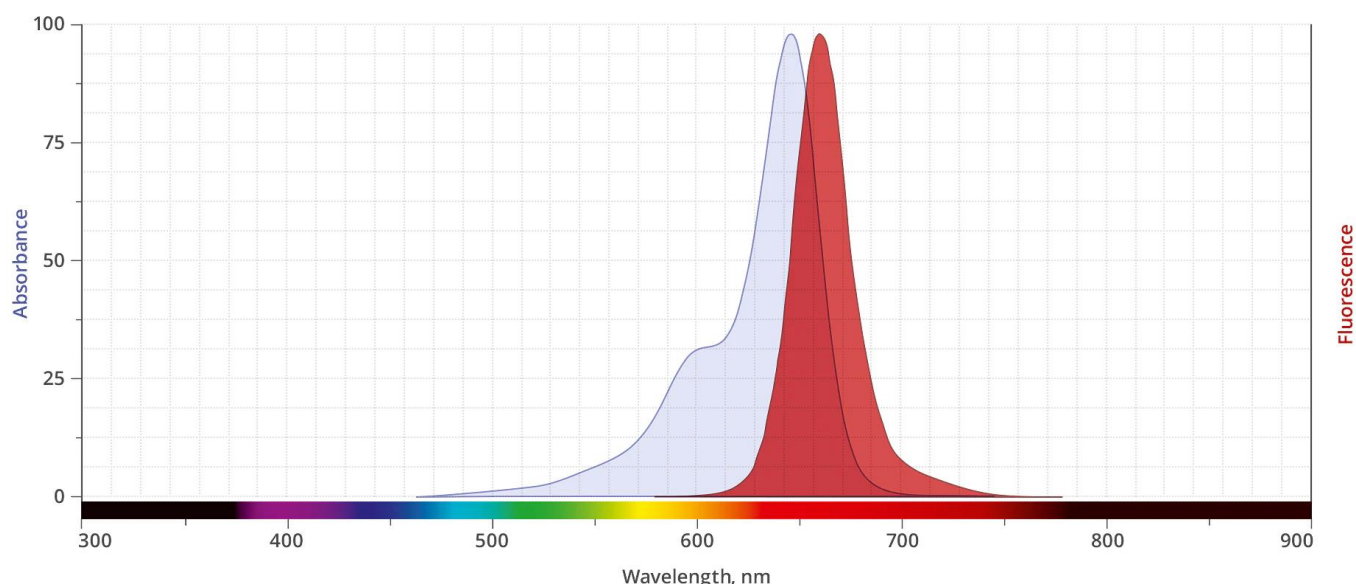
IR 650 Maleimide (IRDye® 650 Maleimide analog) is a water-soluble, bright, far-red-fluorescent

For research use only. Not intended for therapeutic or diagnostic use in animals or humans.

dye and is spectrally similar to other 650 dyes that are used for flow cytometry, microscopy and other applications. IR 650 conjugates ideally suited for the 633 nm or 647 nm laser lines. A significant advantage to using long wavelength dyes such as Cy5® Dye or Alexa Fluor® 647 dye over other fluorophores is the low autofluorescence of biological specimens in this region of the spectrum.

[Maleimide](#) is the most popular sulfhydryl-reactive reactive group for conjugating the dye to a thiol group on a protein, oligonucleotide thiophosphate, or low molecular weight ligand. The maleimide group specifically and efficiently reacts with reduced thiols (sulfhydryl groups, -SH) at pH 6.5 to 7.5 to form stable thioether bond. The resulting conjugates exhibit brighter fluorescence and greater photostability than the conjugates of many other spectrally similar fluorophores.

Abs/Em Spectra



Specifications

Unit Size	1 mg, 5 mg, 25 mg, 100 mg
Reactivity	Thiol (Cys)
Abs/Em Maxima	651/668 nm
Extinction coefficient	230,000 cm ⁻¹ M ⁻¹
Solubility	Water, DMSO, DMF
Spectrally similar dyes	Cy5, Alexa Fluor® 647, DyLight® 649,

For research use only. Not intended for therapeutic or diagnostic use in animals or humans.

Molecular weight	1057.23
Storage Conditions	-20°C.
Shipping Conditions	Ambient temperature

For research use only. Not intended for therapeutic or diagnostic use in animals or humans.