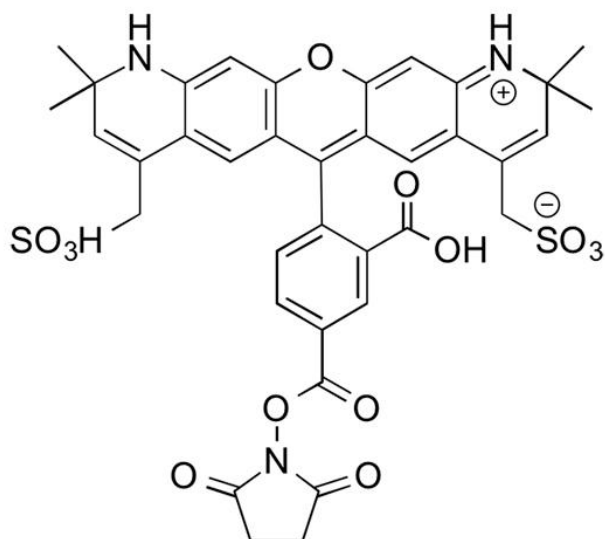
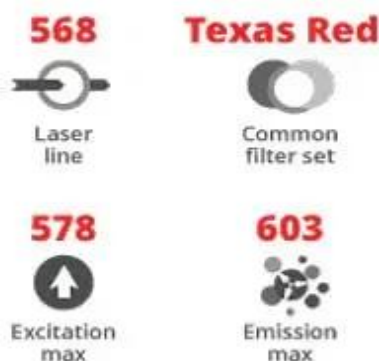


## AZDYE 568 NHS ESTER

**SKU:** FP-1081



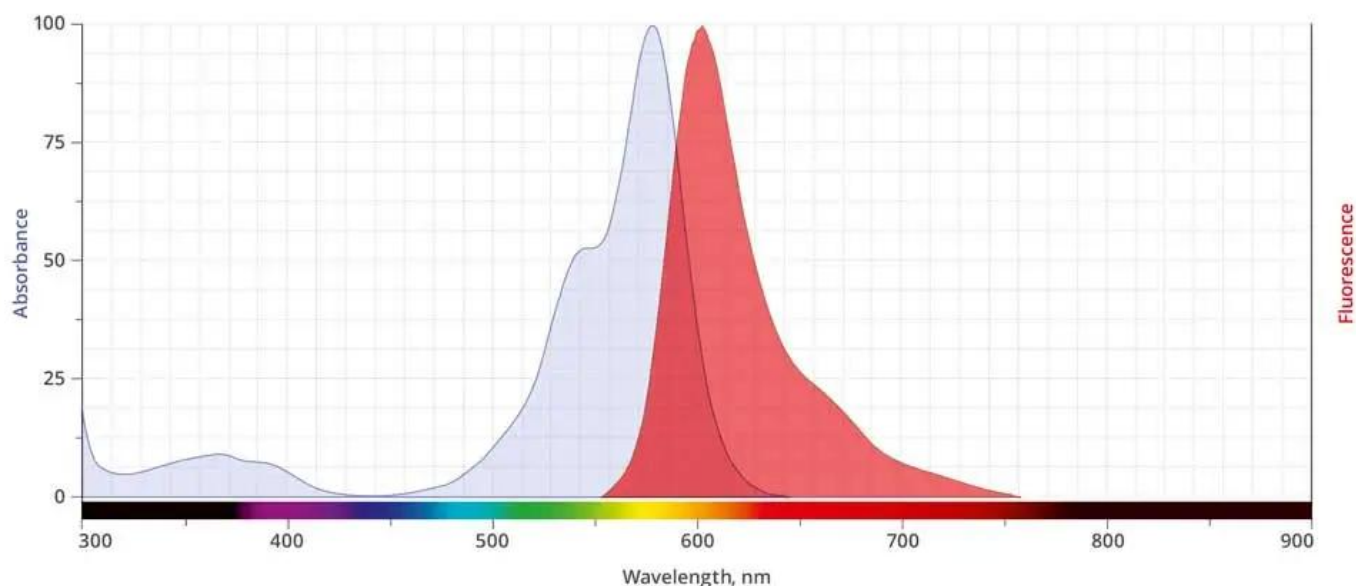
### Description



AZDye™ 568 NHS Ester (Alexa Fluor 568 NHS Ester equivalent) is an amine-reactive, orange fluorescent dye routinely used to label proteins or antibodies through the primary amines (Lys), amine-modified oligonucleotides, and other amine-containing biomolecules. AZDye™ 568 dye can be used for proteins labeling at high molar ratios without significant self-quenching, enabling brighter conjugates and more sensitive detection.

**For research use only. Not intended for therapeutic or diagnostic use in animals or humans.**

AZDye™ 568 is a water-soluble, photostable, and bright orange dye with pH insensitive emission from pH 4 to pH 10. The excitation of AZDye™ 568 dye ideally suited for the 568 nm laser line on the Ar-Kr mixed-gas laser. AF™ 568 dye conjugated to a variety of antibodies, peptides, proteins, tracers, and amplification substrates often used for generation of stable signal in imaging and flow cytometry.



Abs/Em Spectra

## Specifications

<b>Unit Size</b>	1 mg, 5 mg, 25 mg, 100 mg
<b>Reactivity</b>	Primary amine
<b>Abs/Em Maxima</b>	578/602 nm
<b>Extinction coefficient</b>	88,000 cm <sup>-1</sup> M <sup>-1</sup>
<b>Solubility</b>	Water, DMSO, DMF
<b>Spectrally similar dyes</b>	Alexa Fluor® 568, CF™ 568
<b>Molecular weight</b>	791.80 (protonated)
<b>Storage Conditions</b>	-20°C.
<b>Shipping Conditions</b>	Ambient temperature

**For research use only. Not intended for therapeutic or diagnostic use in animals or humans.**

**For research use only. Not intended for therapeutic or diagnostic use in animals or humans.**

[AZDye 568 NHS Ester](https://vectorlabs.com/products/azdye-568-nhs-ester)

<https://vectorlabs.com/products/azdye-568-nhs-ester>