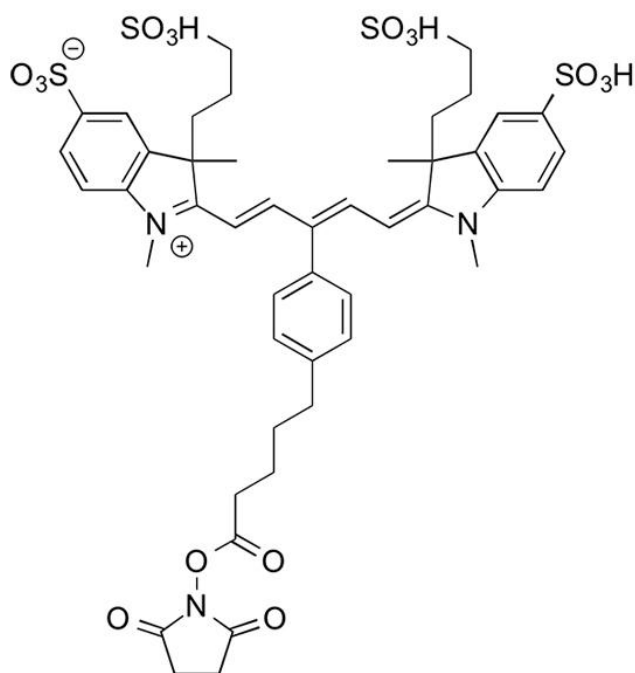


IR 650 NHS ESTER

SKU: FP-1501



Description

633/647



Laser
line

Cy5



Common
filter set

650



Excitation
max

665



Emission
max

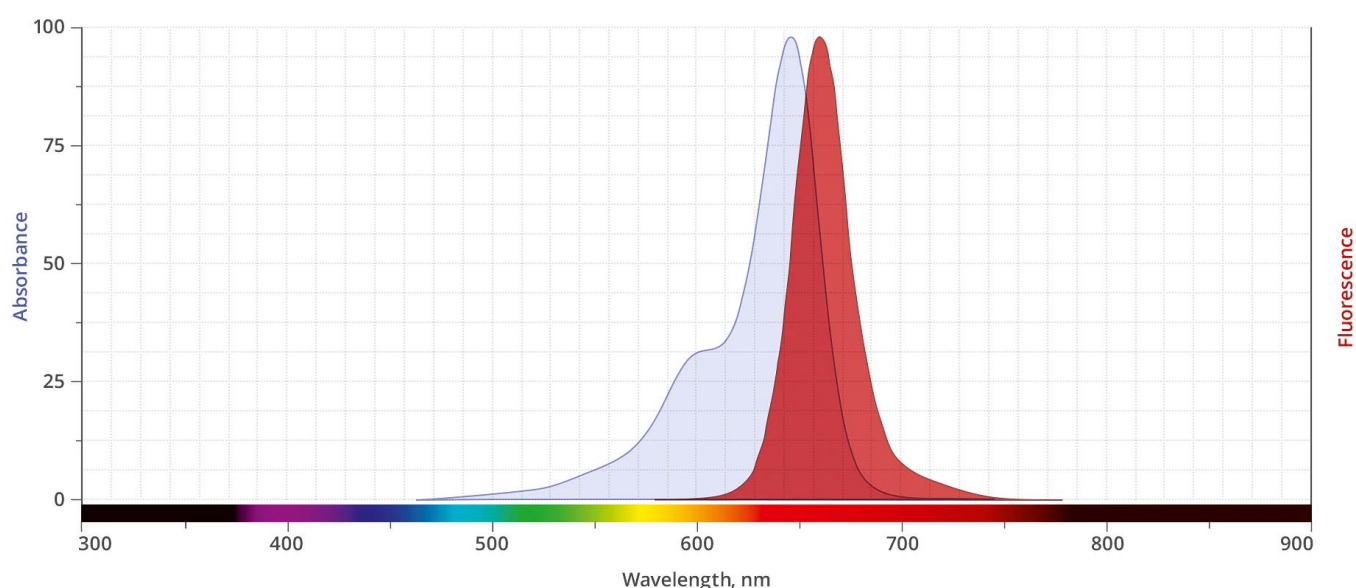
IR 650 NHS Ester (IRDye® 650 NHS Ester analog) is a water-soluble, bright, far-red-fluorescent dye and is spectrally similar to other 650 dyes that are used for flow cytometry, microscopy and other applications. IR 650 conjugates ideally suited for the 633 nm or 647 nm laser lines. A

For research use only. Not intended for therapeutic or diagnostic use in animals or humans.

significant advantage to using long wavelength dyes such as [Cy5® Dye](#) or Alexa Fluor® 647 dye over other fluorophores is the low [autofluorescence](#) of biological specimens in this region of the spectrum.

The NHS ester (or succinimidyl ester) is the most popular amine reactive group for labeling with the primary amines of proteins (Lys), amine-modified oligonucleotides, and other amine-containing molecules. Proteins can be labeled with IR 650 NHS Ester at high molar ratios without significant self-quenching, leading to brighter conjugates and more sensitive detection. IR 650 conjugates can be used for detection of low abundance targets.

Abs/Em Spectra



Specifications

Unit Size	1 mg, 5 mg, 25 mg, 100 mg
Reactivity	Primary amine
Abs/Em Maxima	651/668 nm
Extinction coefficient	230,000 cm ⁻¹ M ⁻¹
Solubility	Water, DMSO, DMF
Spectrally similar dyes	Cy5, Alexa Fluor® 647, DyLight® 649,
Molecular weight	1032.18
Storage Conditions	-20°C.

For research use only. Not intended for therapeutic or diagnostic use in animals or humans.

Shipping ConditionsAmbient temperature

For research use only. Not intended for therapeutic or diagnostic use in animals or humans.